

Equipment

Designation	Setup	Atomization air regulator	Air regulator fluid pressure	Suction rod	Drain rod Ø6x8	Pump output filter	Part number
04C240 BARE PUMP	Bare	-	-	-	-	-	151792000
04C240 WALL-MOUNTED	Wall-Mounted	-	♦	-	-	-	151792100
04C240 WALL-MOUNTED WITH FILTER	Wall-Mounted	-	♦	♦	♦	♦	151792200
04C240 CART-MOUNTED WITH FILTER	Cart-Mounted	-	♦	♦	♦	♦	151792400

Accessories

Designation	Details	Part number
Drain rod d16 s/s connector 18x125	SST Drain rod with Ø16 hose and fitting 18x125	1 049596000
Suction rod diam 25 (Fittings 26x125)	SST Suction rod with Ø25 hose - fittings 26x125 - 600mm length	2 149596150
SUCTION ROD D25 (FITTINGS 26x125) FOR 200 L DRUM	SST Suction rod with Ø25 hose - fittings 26x125 - 1000mm length recommended for 200L drums	3 149596160
Bracket w. straps	Reinforced bracket (with straps) to mount the pump on a wall	4 056100199
Trolley 2 arms	Spare cart (2 handles)	5 051221000

Spare Parts

Designation	Details	Part number
Package of seals for 500-4 air motor	Seal kit for the air motor	1 146260990
SERVICING KIT FOR MOTOR 500/4	Service kit (Seal kit + Air Motor components) for the air motor	2 146260995
PACKAGE OF SEALS FOR FLUID SECTION 120CC	Seal kit for the fluid section	3 144970090
Servicing kit for hyd. 120	Service kit (Seal kit + Fluid Section components) for the fluid section	4 144970095
PACKAGE OF SEALS FOR FLUID SECTION C240		144970090
SERVICING KIT FOR HYD. C240		144970095

04C240 Airspray Paint Pump

Airspray / Pumps



- Stainless steel construction
- Designed for medium viscosity materials
- Extended lifetime

Markets



BOND • PROTECT • BEAUTIFY



04C240 Airspray Paint Pump

Paint circulation pump for medium or low pressure applications.

Designed for medium viscosity products with 1 or more guns. For circulating & automatic machines.



Technical data table

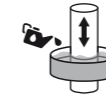
Designation	Value	Unit: metric (US)
Pressure Ratio	4 : 1	
Maximum Fluid Pressure	24 (347.8)	bar (psi)
Maximum Air Pressure	6 (87)	bar (psi)
Maximum Temperature	60 (140)	°C (°F)
Cylinder	240 (8.1)	cc (oz)
Sound Level	80	dBa
Fluid Output at 30 cycles/mn	7.2 (1.9)	l/min (gal/mn)
Free Flow Rate	14.4 (3.8)	l/mn (gal/mn)
Air Consumption at 30 cycles/mn at 4 bar (60 psi)	10.3 (6.1)	m³/h (cfm)
Air Inlet	F 3/4" BSP	
Fluid Outlet	M 1/2 JIC	
Fluid Inlet	M 26x125	
Number of Cycles per liter of products	4	
Sealing Packing Lower PEHD	♦	
Sealing Packing Upper PTFE G - Polyfluid	♦	
Height	83 (32.7)	cm (in)
Width	40 (15.7)	cm (in)
Depth	21 (8.3)	cm (in)
Wetted Shares: Stainless Steel	♦	
Weight	27 (59.5)	kg (lbs)



Technologies



Chevron Sealing



Cup Lub



2 Ball



Triple Chrome Layer



Description

Performance:

- ♦ High output to feed several guns in circulation
- ♦ High suction power

Productivity:

- ♦ Ideal for most materials

Sustainability:

- ♦ Triple chrome piston & cylinder, stainless steel ball & carbide seat for long-term use
- ♦ Sleek design with few parts. The inversion system provides a fast changeover for a constant material delivery.

